

Magnum-X

The new dimension
in lifting technology

SpanSet®

Magnum-X Manages Heavy Loads with Ease



Certification from 40,000 LBS

Always One Step Ahead.

For over 40 years, SpanSet has been at the forefront of the development of extremely high performance synthetic fiber lifting slings. With constant innovation and a consistent focus on quality, we have continuously improved our products. Our goal: to make your job lifting the heaviest loads as safe and efficient as possible.

Our latest milestone: Magnum-X. Its design makes it unique. Unlike the protective sleeve on conventional roundslings, the Magnum-X has an extremely compact outer cover. The incorporation of high performance polyester makes the outer cover extremely robust and therefore more tear and abrasion resistant than a conventional polyester protective sleeve. The fabric is also made entirely of this innovative high performance fiber. This completely new structure makes the Magnum-X much more compact, lighter and easier to handle. Also, the special structure reduces the formation of wrinkles in the sleeve cover both at the crane hook and around the load, which is effective in preventing premature wear.

Consequently, you will see a noticeable increase in work efficiency. Additionally, you will of course benefit from the SpanSet safety and quality standards, which set trends in the industry. Your safety is our driving force.

The new Magnum-X – the new dimension in lifting technology



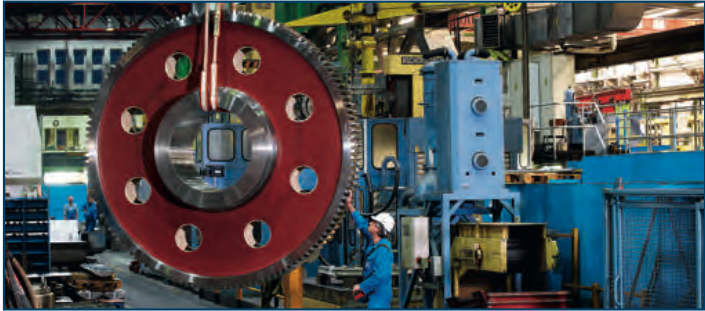
Universal sling for loads of all types: the new Magnum-X.



Slimmer is better: Magnum-X on the left; the "normal" Magnum on the right.



Optimally protected: secutex® clip sleeving to protect against sharp edges.



Perfect handling: Magnum-X is light and compact.



Professional: data collection and management with RFID transponder and EPIS.

Magnum-X

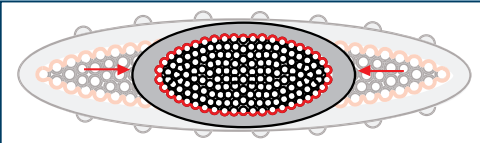
The Advantages at a Glance

✓ X-tremely compact

The innovative construction with a high performance polyester fiber and a compact protective cover partially woven with the same material make the Magnum-X up to 50% slimmer than comparable roundslings with the same load bearing capacity. At the same time, it produces greater stiffness within the sling along both axis.

+ Customer benefit:

The roundsling is not bunched even in smaller crane hooks and attachment points and it is easy to suspend the sling overhead.



Cross-section under load (WLL) by comparison.

✓ X-actly identifiable

The Magnum-X has an extra sleeve with a raised, woven-in load capacity indicator – a safety feature that has proved to be a success.

+ Customer benefit:

The load capacity is clearly identifiable even from a distance and in the dirtiest conditions. Confusing the roundslings is therefore effectively avoided, protecting people and material from accidents.



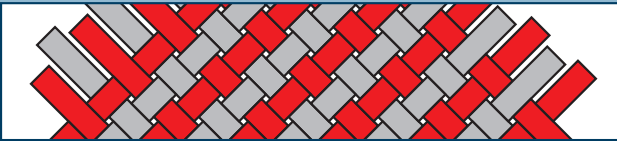
Raised, woven-in load capacity indicator.

✓ X-tremely wear resistant

The outer protective cover is reinforced with an extremely abrasion and tear resistant high performance polyester. In addition, the special design reduces the formation of bunching at the attachment point, which again significantly improves the wear behavior.

+ Customer benefit:

The Magnum-X exhibits the greatest reliability and longest durability even under the harshest operating conditions – an economic factor you can count on.



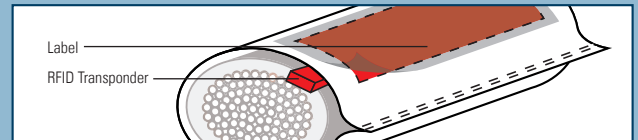
Compact outer cover with high performance polyester.

✓ X-actly verifiable

The label, with a clear sleeve, is tear resistant and attached to a sleeve, which is sewn firmly onto the outer protective cover. Integrated into this is an RFID transponder for storing the product data and indelibly identifying the sling.

+ Customer benefit:

The Magnum-X is ideally protected from identity and data loss. This guarantees a long operating time and makes it easier to store data for the inspection service.



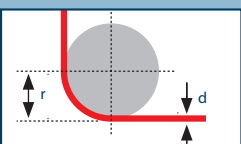
Protected label with RFID transponder.

✓ X-tremely resilient

The new, high performance fiber has a significantly greater capacity. Consequently, less material is needed in the fabric, which makes the Magnum-X up to 50% lighter than conventional roundslings.

+ Customer benefit:

With the same load capacity, the Magnum-X can be laid against tighter edge radii than conventional polyester slings. Work becomes more efficient, quicker and safer.



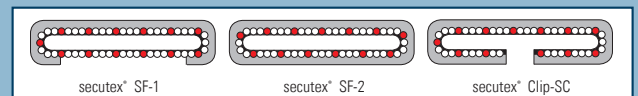
Definition of sharp edge:
edge radius r <math>< d</math>
edge radius <math>< thickness of sling gear.</math>

✓ X-tremely protected

Even better protection for the Magnum-X is provided on sharp corners and edges by the newly designed secutex® clip protective sleeving, which is reinforced with high performance polyester.

+ Customer benefit:

The new secutex® clip protective sleeving provides optimum protection for the Magnum-X and thereby guarantees the highest level of safety and long operating life.



secutex® clip protective sleeves.

Magnum-X The Size Comparison

Magnum
40,000 LBS

Magnum-X
40,000 LBS

SpanSet, Inc.

3125 Industrial Drive
Sanford, NC 27332
Phone: 800-334-7505
Fax 919-774-6316
ssales@spanset-usa.com
www.spanset-usa.com