



SpanSet®

01

Fall Protection
Lifting
Cargo Control
Safety Management
**CONFINED SPACE
FALL ARREST AND
RESCUE SYSTEMS**



SpanSet is here for you:

Switzerland, Australia, Austria, Brazil, China, France, Germany, Hungary, UK, Indonesia, Italy, Poland, Spain, Taiwan, USA.



Subject to technical alterations. All rights reserved. No part of this catalogue may be reproduced or processed, duplicated or distributed using electronic systems in any form (print, photocopy, microfilm or any other procedure) without the written approval of the SpanSet company. This catalogue has been prepared with a II due care; SpanSet accepts no liability for errors or omissions. © 2013 by SpanSet Inc.

XTIRPA CONFINED SPACE FALL ARREST AND RESCUE SYSTEMS

Features and Benefits

Portable Manhole Guard Davit System
Tow Bar Hitch Davit Systems
H-Base Davit System
Fixed Davits
Counterweight System
Accessories
Access and Rescue Equipment



Features and Benefits of the Xtirpa System



Innovative Design

The only patented system on the market that will allow you to install a davit arm on a manhole guard for rescue purposes.

Lightweight

- Manhole guard
- Davit arm 23 lbs.
- Davit mast 22 lbs.

Using an aluminium composite (Duralcan®), the system has a maximum safe working load of 420 lbs.

Ergonomic Design

The system can be easily transported and installed by one person. Set up is safe, easy and can be done in minutes.

More Versatile

The system is designed for multiple use, using different combinations of components to adapt for use in most kinds of confined spaces.

Easy Storage

No vehicle modifications are required. These units are so compact they don't take up much storage space.

Cost Effective

The system's versatility will save inventory costs, and as it reduces the incidence of back, shoulder and elbow injuries it will reduce pay outs on worker's compensation and time away from the workplace.

Built to Last

Duralcan has been independently tested and proven to be highly corrosion resistant. This ensures lower long term costs and a long work life for Xtirpa.

Higher Rates of Compliance to Safety Regulations

Due to the system's simple, safe and quick installation, employers will be able to implement safe working practices easily.

Patents

- European - 1490287
- United States - 7213715
- Canadian - 2479513
- Other patents pending.

Compliance

- Meets or exceeds applicable ANSI, OSHA, and CE Standards.



XTIRPA CONFINED SPACE FALL ARREST AND RESCUE SYSTEMS

Features and Benefits

Portable Manhole Guard Davit System

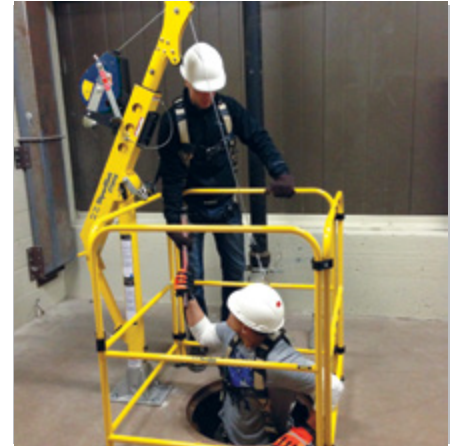
Tow Bar Hitch Davit Systems

H-Base Davit System

Fixed Davits

Counterweight System

Accessories



Portable Manhole Guard Davit System

These portable manhole guards have an integrated mast which, used in conjunction with a davit arm USIN2210, transforms these systems into confined space fall protection and retrieval systems.

These systems will facilitate your access to underground chambers or any other type of confined space where a portable manhole guard is needed.

With a capacity of 420 lbs. (safety factor 10:1) this systems meets or exceeds CSA, ANSI, OSHA, and CE Standards.

Fall Protection and Retrieval Davit Arm with Secondary Block

The fall protection and retrieval davit arm with secondary block will facilitate your access to underground chambers and any other confined-space. Light, reliable and easy to install, this versatile davit arm can be used not only with the Portable Manhole Guard but also with the Tow Bar Hitch System, the H-Base System and the Mast Systems.

Its weight of only 23 lbs. provides a capacity of 360 lbs. when used with a Mast System, and a capacity of 420 lbs. when used with the Manhole Guard System. With a 10:1 safety factor it is also equipped with a required 5,000 lbs anchor point requested by safety regulations and meets or exceeds CSA, ANSI, and OSHA Standards.

The system is infinitely expandable with the addition of extra barricade sections.

USIN2108 - 42" Portable Manhole Guard



USXT2 Portable Manhole Guard Davit System (USXT3 with Stabilizer)

XTIRPA CONFINED SPACE FALL ARREST AND RESCUE SYSTEMS

Features and Benefits

Portable Manhole Guard Davit System

Tow Bar Hitch Davit Systems

H-Base Davit System

Fixed Davits

Counterweight System

Accessories



Portable Manhole Guard Davit System

USIN2108 Manhole Guard

Maximum Working Load with Davit Arm USIN2210	420 lbs
Maximum Capacity at Anchorage Point	5,000 lbs
Weight	29 lbs
Corner Mast Length	45"
Height	42"
Length	39"
Depth	39"
Structural Tubes	Duralcan Aluminum
Leveling Screws	Stainless Steel Rubber
Hardware	Zinc Plated Steel
Finish	Security Yellow

USIN2210 Davit Arm

Working Load Mass with Manhole Guard XTIN2108	420 lbs
Maximum Capacity with Lifeline Winch & Barricade Position 1&2	4,300 lbs
Maximum Capacity with Material Handling - Position 3	2,125 lbs
Maximum Capacity at Anchorage Point	5,000 lbs
Weight	23 lbs
Length when Opened	80"
Length when Closed	52"
Extension and Guide Tubes	Aluminum
Davit Arm Link	Aluminum
Anchorage Hooks	Stainless Steel
Hardware	Zinc Plated Steel
Guide Tube Sliders	Ultra High Molecular-weight Polyethylene
Pulley	Black Acetal
Finish	Security Yellow



USIN2210 - Davit Arm

XTIRPA CONFINED SPACE FALL ARREST AND RESCUE SYSTEMS

Features and Benefits

Portable Manhole Guard

Davit System

Tow Bar Hitch Davit Systems

H-Base Davit System

Fixed Davits

Counterweight System

Accessories



Portable Manhole Guard Davit System

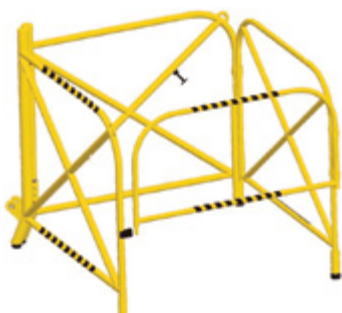


USIN2108-18 - Stabiliser for 42" Portable Manhole Guard

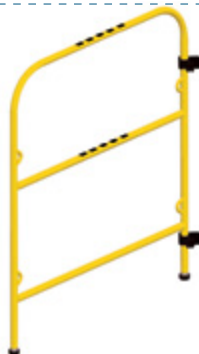


USIN52 - Manhole Guard Repositioning Wheels

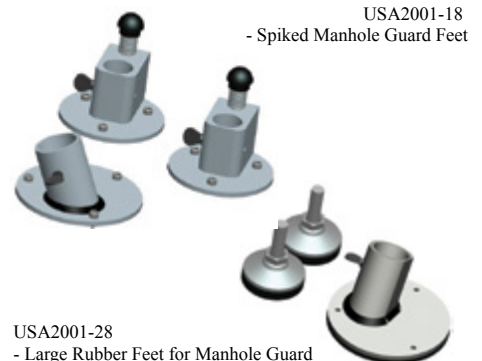
Also Available:



USIN2001 - 34" Portable Manhole Guard



USA2101-04 - Multi-function barricade extension



USA2001-28 - Large Rubber Feet for Manhole Guard

USA2001-18 - Spiked Manhole Guard Feet

USIN2108-18 3.5 ft Stabilizer

Weight	4 lbs
Height	18"
Width	21"
Depth	15"
Structural Tubes	Duralcan Aluminum
Leveling Screws	Stainless Steel Rubber
Hardware	Zinc Plated Steel
Finish	Security Yellow

USXTIN52 Repositioning Wheels

Weight	39 lbs
Height	20"
Width	26"
Depth	28"
Structural Tubes	Rectangular Sectioned Steel
Wheels	Ball Bearing No-Flat Rubber
Finish	Black Powder Coated



DANGER
Confined Space
Entry by Permit
Only

XTIRPA CONFINED SPACE FALL ARREST AND RESCUE SYSTEMS

Features and Benefits

Portable Manhole Guard Davit System

Tow Bar Hitch Davit Systems

H-Base Davit System

Fixed Davits

Counterweight System

Accessories

Access and Rescue Equipment



24" Tow Bar Hitch Davit System



The most versatile system on the market, the Tow Bar Hitch Mount connects to most 2" popular system and offers adjustable screw pads for easy leveling.

This system uses the same davit arm as the Manhole Guard Davit System (USIN2210) and gives a maximum capacity of 360 lbs, has a safety factor of 10:1 and meets or exceeds CSA, ANSI, OSHA, and CE Standards.

* To be Class III receiver.

USIN2126 - Trailer Hitch Mount



US6 - Tow Bar Hitch Davit System

XTIRPA CONFINED SPACE FALL ARREST AND RESCUE SYSTEMS

Features and Benefits

Portable Manhole Guard Davit System

Tow Bar Hitch Davit Systems

H-Base Davit System

Fixed Davits

Counterweight System

Accessories

Access and Rescue Equipment



Tow Bar Hitch Davit System

USIN2108 Davit Arm

See Portable Manhole Guard Davit Systems for specifications

USIN2003 Mast

Working Load Mass with Davit Arm USIN2210	360 lbs
Maximum Capacity with Davit Arm USIN2210	3,597 lbs
Weight	22 lbs
Mast Material	Aluminum
Anchorage Plates	Aluminum
Finish	Security Yellow

USIN2126 Tow Bar Hitch Mount

Working Load Mass with Mast USIN2003 and Davit Arm USIN2210	360 lbs
Maximum Capacity with Mast and Davit Arm USIN2210	3,597 lbs
Hitch Vehicle Minimum Weight	6,012 lbs
Class of Hitch	To be Class III receiver
Weight	31 lbs
Extensions	Aluminum
Mast Sleeve	Aluminum
Extension Sliders	Black Delrin
Positioning Levels and Hardware	Zinc Plated Steel
Positioning Pads	Aluminum
Finish	Security Yellow



USIN2003 - Davit Mast

XTIRPA CONFINED SPACE FALL ARREST AND RESCUE SYSTEMS

Features and Benefits

Portable Manhole Guard Davit System

Tow Bar Hitch Davit Systems

H-Base Davit System

Fixed Davits

Counterweight System

Accessories

Access and Rescue Equipment



24" Tow Bar Hitch Davit System



USIN2210 - Davit Arm

USIN2210 Davit Arm

See Portable Manhole Guard Davit Systems for specifications

USA2126 Anchor Bolt Adaptor

Maximum Capacity	360 lbs
Maximum Working Moment	214 lbs
Maximum Moment	214 lbs
Weight	33 lbs
Principal Body Guide	Zinc Plated Stainless Steel
Hardware	Steel
Plate Support	Steel

USIN2126-21 - Anchor Bolt Adaptor for Trailer Hitch Mount



USIN2126-07 - Universal Joint for Trailer Hitch



XTIRPA CONFINED SPACE FALL ARREST AND RESCUE SYSTEMS

- Features and Benefits
- Portable Manhole Guard Davit System
- Tow Bar Hitch Davit Systems**
- H-Base Davit System
- Fixed Davits
- Counterweight System
- Accessories
- Access and Rescue Equipment



24" Tow Bar Hitch Davit System

USA2126-10 90 ° Extension

Weight	64 lbs
Length	52"
Working Height	14"
Width	5.1cm ²
Material	Steel
Finish	Security Yellow

USA2126-09 Extension

Weight	31 lbs
Length	76"
Width	5.1cm ²
Material	Steel

USA2126-07 Universal Joint

Weight	8 lbs
Length	11"
Width	5.08 cm ²
Material	Steel



USIN2126-10 - 90 Degree Extension for Trailer Hitch Mount



USIN2126-09 - 6ft (183cm) Extension for Trailer Hitch Mount



USIN2126-14 - C Clamp Adapter for Trailer Hitch Mount

XTIRPA CONFINED SPACE FALL ARREST AND RESCUE SYSTEMS

Features and Benefits

Portable Manhole Guard Davit System

Tow Bar Hitch Davit Systems

H-Base Davit System

Fixed Davits

Counterweight System

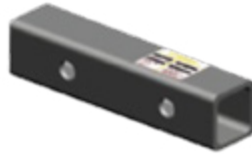
Accessories

Access and Rescue Equipment

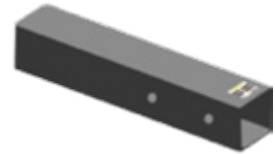


47" Tow Bar Hitch Davit System

USA2305-20 - T-Base Mount Reducer



USA2305-25 - Counterweight Adapter for 6 ft Extension



USA2305-16 - T-Base Mount Extension 6 ft



USIN2237 - Extendable Arm for 4 ft Davit



XTIRPA CONFINED SPACE FALL ARREST AND RESCUE SYSTEMS

Features and Benefits

Portable Manhole Guard Davit System

Tow Bar Hitch Davit Systems

H-Base Davit System

Fixed Davits

Counterweight System

Accessories

Access and Rescue Equipment



USIN2305 Universal T-Base

Working Load Mass with Mast USIN2240 and Davit Arm USIN2237	360 lbs
Maximum Capacity with Mast USIN2240 and Davit Arm USIN2237	3600 lbs
Hitch Vehicle Minimum Weight	6000 lbs
Class of Hitch	To be Class III receiver
Extensions	Aluminum
Mast Sleeve	Aluminum
Extension Sliders	Black Delrin
Positioning Levels and Hardware	Zinc Plated Steel
Positioning Pads	Aluminum
Finish	Security Yellow

USIN2240 Mast

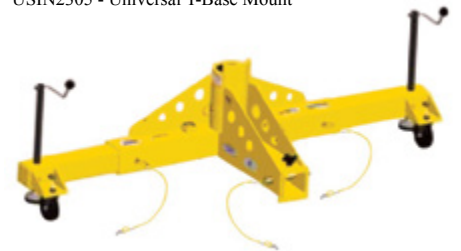
Maximum Working Load with Davit Arm USIN2237	360 lbs
Maximum Capacity with Davit Arm USIN2237	3600 lbs
Weight	24 lbs
Mast	Aluminum
Handle	Aluminum
Finish	Security Yellow

USIN2237 4 ft Davit Arm

Maximum Working Load with Mast USIN2240	360 lbs
Maximum Capacity with Mast USIN2240	3600 lbs
Maximum Capacity at Anchor Point	5000 lbs
Weight	35 lbs
Extensions and Guide Tubes	Aluminum
Anchorage Hooks	Stainless Steel
Hardware	Zinc Plated Stainless Steel
Guide Tube Sliders	Ultra High Molecular - weight Polyethylene
Pulley	Black Acetal
Finish	Security Yellow

47" Tow Bar Hitch Davit System

USIN2305 - Universal T-Base Mount



USIN2240 - Davit Mast



XTIRPA CONFINED SPACE FALL ARREST AND RESCUE SYSTEMS

Features and Benefits

Portable Manhole Guard Davit System

Tow Bar Hitch Davit Systems

H-Base Davit System

Fixed Davits

Counterweight System

Accessories

Access and Rescue Equipment



H-Base Davit System

This three-piece hoist system was designed to be used in conjunction with the davit arm USIN2210 and the mast USIN2003 that are common to the three davit systems. The portable lower base with adjustable feet to fit most standard confined spaces. It offers a solution for the entry, rescue and positioning of personnel.

The combination of davit arm and mast allows the operator to pivot the system for easier and safer rescue. Durable and versatile, the system has a capacity of 360 lbs and has a safety factor of 10:1 and meets or exceeds CSA, ANSI, OSHA, and CE Standards.



USIN2003 - Davit Mast

USIN2210 Davit Arm

See Tow Bar Hitch Davit Systems for specifications

USIN2203 Mast

See Tow Bar Hitch Davit Systems for specifications

USIN2118 H-Base

Maximum Working Load with Mast and Davit Arm USIN2210	360 lbs
Maximum Capacity with Mast and Davit Arm	3600 lbs
Weight	81 lbs
Extensions	Aluminum
Mast Sleeve	Aluminum
Suspension and Anchor Points	Aluminum
Extension Sliders	PVC Pipe
Positioning Levels and Hardware	Zinc Plated Stainless Steel
Positioning Pads	Aluminum
Finish	Security Yellow



USIN2210 - Davit Arm

XTIRPA CONFINED SPACE FALL ARREST AND RESCUE SYSTEMS

- Features and Benefits
 - Portable Manhole Guard Davit System
 - Tow Bar Hitch Davit Systems
 - H-Base Davit System**
 - Fixed Davits
 - Counterweight System
 - Accessories
 - Access and Rescue Equipment
-



H-Base Davit System



USIN2118 - H-Base



US5 - H-Base Davit System

XTIRPA CONFINED SPACE FALL ARREST AND RESCUE SYSTEMS

Features and Benefits

Portable Manhole Guard Davit System

Tow Bar Hitch Davit Systems

H-Base Davit System

Fixed Davits

Counterweight System

Accessories

Access and Rescue Equipment



Low Clearance Integrated Mast and Davit Arm

This low clearance davit with an integrated mast and davit arm is designed for use in any of the 24" adapter bases. Ideal when a shorter clearance is required.

The unit weighs 15 lbs and has a weight capacity of 360 lbs, is 36" in height and has a 18" reach.



USIN2295 - Low Clearance Mast and Davit (base adapter for application use only. Available separately.

24" Davit Mast and Base Kit

This unique adjustable davit system was developed to allow workers greater versatility, with the mast adapter permanently fixed to a structure and the davit arm and mast moved around as required. Ensuring easy and safe access into a wide variety of confined space this davit is easily positioned from 15" 18" and 24". The davit's versatility offers a solution

where other conventional systems are impractical. With a safety factor of 10:1 the davit meets or exceeds CSA, ANSI, OSHA, and CE Standards.

Code	Description	Min Reach	Max Reach	Max Height
US24	24" Davit, Mast and Base kit	15"	24"	118"
USIN2210	24" ft Davit Arm	-	-	-
USIN2003	Standard Mast	-	-	-
USIN2044	15" Mast Extension	-	-	132"
USIN2109	18" Mast Extension	-	-	135"
USIN2045	24" Mast Extension	-	-	140"
USIN2005	Stainless Steel Floor Adapter	-	-	-

USIN2210 Davit Arm

See Tow Bar Hitch Davit Systems for details

USIN2003 Mast

See Tow Bar Hitch Davit Systems for details

XTIRPA CONFINED SPACE FALL ARREST AND RESCUE SYSTEMS

Features and Benefits

- Portable Manhole Guard Davit System
- Tow Bar Hitch Davit Systems
- H-Base Davit System

Fixed Davits

- Counterweight System
- Accessories
- Access and Rescue Equipment



24" Davit Mast and Base Kit

XT24 - 24" Davit System



USIN2005 Stainless Steel Floor Adapter

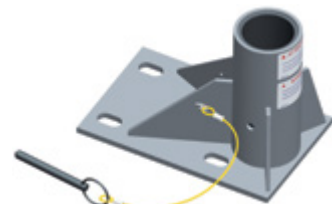
Maximum Working Moment	218 lbs
Maximum Moment	3000 lbs
Weight	22 lbs
Plate and Gussets	Aluminum
Sleeve	Aluminum
Sleeve Bearing	Aluminum
Pin	PVC Pipe
Lanyard	Zinc Plated Stainless Steel

USIN2005 Stainless Steel Floor Adapter

Maximum Working Load with Davit Arm USIN2210	360 lbs
Maximum Capacity with Davit Arm USIN2210	3600 lbs
Weights	20 lbs/ 24 lbs/ 26 lbs
Cylinder and Sleeve	Steel DOM 1026
Pin	Zinc Plated Stainless Steel
Lanyard	Nylon Covered Steel Cable
Finish	Security Yellow



USIN2045 - 24" Mast Extension



USIN2005 - Stainless Steel Floor Adapter

XTIRPA CONFINED SPACE FALL ARREST AND RESCUE SYSTEMS

Features and Benefits

Portable Manhole Guard Davit System

Tow Bar Hitch Davit Systems

H-Base Davit System

Fixed Davits

Counterweight System

Accessories

Access and Rescue Equipment



47" Davit Mast and Base Kit

This unique adjustable davit system was developed to allow workers greater versatility, with the mast adapter permanently fixed to a structure and the davit arm and mast moved around as required.

Ensuring easy and safe access into a wide variety of confined spaces this davit is easily positioned from 30", 36" and 47". The davit's versatility offers a solution where other conventional systems are impractical.

With a safety factor of 10:1 the davit meets or exceeds CSA, ANSI, OSHA, and CE Standards.



USIN2240 - Davit Mast

Code	Description	Min Reach	Max Reach	Max Height
US48	47" Davit, Mast and Base kit	31"	47"	88"
USIN2237	47" ft Davit Arm	-	-	-
USIN2040	Mast	-	-	-
USIN2238	Stainless Steel Floor Adapter	-	-	-
USIN2238	Stainless Steel Floor Adapter	-	-	-

USIN2237 47" Davit Arm

Maximum Working Load with Mast USIN2240	360 lbs
Maximum Capacity with Davit Arm USIN2240	3,600 lbs
Maximum Capacity at Anchor Point	5,000 lbs
Weights	35 lbs
Extension and Guide Tubes	Aluminum
Anchorage Hooks	Stainless Steel
Hardware	Zinc Plated Stainless Steel
Guide Tube Sliders	Ultra High Molecular-weight Polyethylene
Pulley	Black Acetal
Finish	Security Yellow

USIN2240 Mast

Maximum Capacity with Davit Arm USIN2237	360 lbs
Maximum Capacity with Davit Arm USIN2237	3600 lbs
Weights	24 lbs
Mast	Aluminum
Handle	Aluminum
Finish	Security Yellow

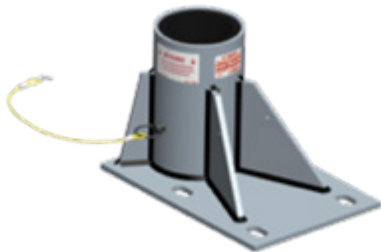
XTIRPA CONFINED SPACE FALL ARREST AND RESCUE SYSTEMS



- Features and Benefits
- Portable Manhole Guard Davit System
- Tow Bar Hitch Davit Systems
- H-Base Davit System
- Fixed Davits**
- Counterweight System
- Accessories
- Access and Rescue Equipment

47" Davit Mast and Base Kit

USIN2238 - 102mm Floor Adapter



US48 - Mast and Base



USIN2237 - Extendable Davit Arm



USIN2238 Stainless Steel Floor Adapter

Maximum Working Moment	425 lbs
Maximum Moment	4400 lbs
Weight	50 lbs
Plate and Gussets	Stainless Steel
Sleeve	Stainless Steel
Sleeve Bearing	Acetal Black Delrin
Pin	Zinc Plated Stainless Steel
Lanyard	Nylon Covered Steel Cable

XTIRPA CONFINED SPACE FALL ARREST AND RESCUE SYSTEMS

Features and Benefits

Portable Manhole Guard Davit System

Tow Bar Hitch Davit Systems

H-Base Davit System

Fixed Davits

Counterweight System

Accessories

Access and Rescue Equipment



96" Davit Mast and Base Kit

This unique, adjustable davit system was developed to allow workers greater versatility, with the mast adapter permanently fixed to a structure and the davit arm and mast moved around as required.

Ensuring easy and safe access into a wide variety of confined spaces this davit is easily positioned from 60" to 96".

The davit's versatility offers a solution where other conventional systems are impractical.

With a safety factor of 10:1 the davit meets or exceeds CSA, ANSI, OSHA, and CE Standards.

Code	Description	Min Reach	Max Reach	Max Height
US96	8 ft Davit, Mast and Base kit	60"	96"	110"
USIN2197	8ft Davit Arm	-	-	-
USIN2199	Mast	-	-	-
USIN2201	Stainless Steel Floor Adapter	-	-	-
USIN2238	Stainless Steel Floor Adapter	-	-	-

XTIN2197 - 8ft Davit Arm



USIN2238 Stainless Steel Floor Adapter

Maximum Working Load with Winch and Mast USIN2199 Position 1 or 2	360 lbs
Maximum Capacity Material Handling with Mast USIN2199 Position 1 or 2	3600 lbs
Maximum Capacity at Anchor Point	5000 lbs
Weight	33 lbs
Length When Opened	80"
Length When Closed	52"
Extension and Guide Tubes	Aluminum
Davit Arm Link	Aluminum
Anchorage Hooks	Stainless Steel
Hardware	Zinc Plated
Guide Tube Sliders	Ultra High Molecular Weight Polyethylene
Pulley	Black Acetal
Finish	Security Yellow

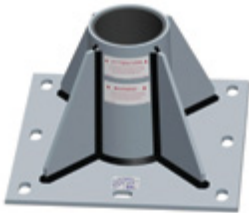
XTIRPA CONFINED SPACE FALL ARREST AND RESCUE SYSTEMS

- Features and Benefits
- Portable Manhole Guard Davit System
- Tow Bar Hitch Davit Systems
- H-Base Davit System
- Fixed Davits**
- Counterweight System
- Accessories
- Access and Rescue Equipment

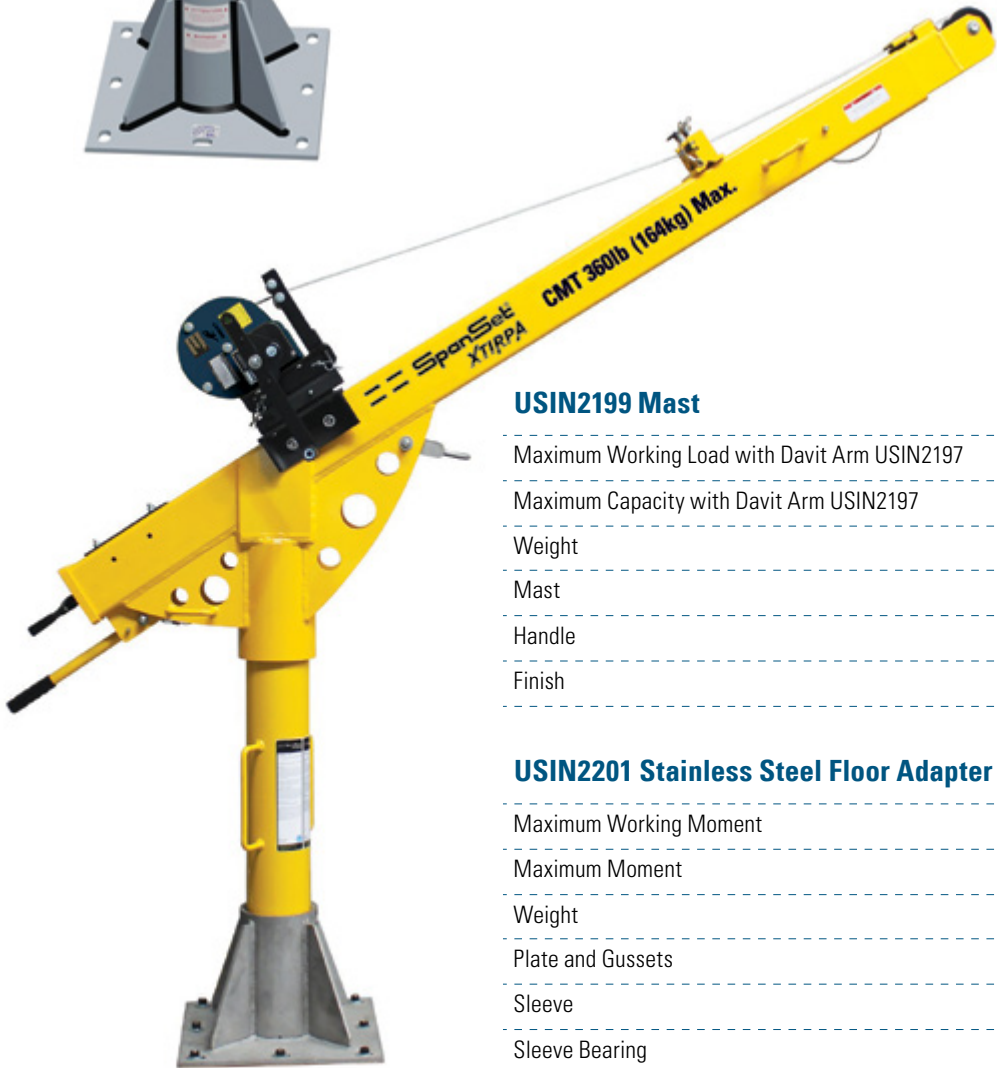


96" Davit Mast and Base Kit

USIN2201 - 96" Floor Mount Adapter



USIN2199 - Davit Mast



USIN2199 Mast

Maximum Working Load with Davit Arm USIN2197	360 lbs
Maximum Capacity with Davit Arm USIN2197	3600 lbs
Weight	24 lbs
Mast	Aluminum
Handle	Aluminum
Finish	Security Yellow

USIN2201 Stainless Steel Floor Adapter

Maximum Working Moment	880 lbs
Maximum Moment	8800 lbs
Weight	701 lbs
Plate and Gussets	Stainless Steel
Sleeve	Stainless Steel
Sleeve Bearing	PVC Pipe

XTIRPA CONFINED SPACE FALL ARREST AND RESCUE SYSTEMS

Features and Benefits

Portable Manhole Guard Davit System

Tow Bar Hitch Davit Systems

H-Base Davit System

Fixed Davits

Counterweight System

Accessories

Access and Rescue Equipment



Counterweight System

This counterweight system is designed for multiple confined space access in the same area where the extra reach of the 47" davit arm is required. Additionally, it can be used in areas where a fixed base is not possible.

The system consists of a central unit to which a number of optional equipment can be added, including extensions, leg adjustment and anchoring options.

With a weight capacity of 360 lbs this system can be used in conjunction with a counterbalancing weight rack or a wheel pad assembly when using a vehicle. The davit arm has a 5,000 lbs anchor point.

USIN2237 - Extendable Arm for 47" Davit



USIN2240 - Davit Mast for 47" Davit
42" Height

USIN2313 - Davit Mast for 47" Davit
42" Height



USA2237-06 - Removable Adapter for Positioning Winch

XTIRPA CONFINED SPACE FALL ARREST AND RESCUE SYSTEMS

Features and Benefits

Portable Manhole Guard Davit System

Tow Bar Hitch Davit Systems

H-Base Davit System

Fixed Davits

Counterweight System

Accessories

Access and Rescue Equipment



Counterweight System

Required Components

USIN2305 - Universal T-Base Mount



USA2305-27 - Counterweight Base



USP2305-16n - 50 lbs Counterweight Weight Plates



USA2305-23 - Counterweight Base Extension Tube



Optional Accessories

USA2305-25 - Counterweight Adapter for 72" Extension



USA2305-16 - T-Base Mount Extension 72"



XTIRPA CONFINED SPACE FALL ARREST AND RESCUE SYSTEMS

Features and Benefits

Portable Manhole Guard Davit System

Tow Bar Hitch Davit Systems

H-Base Davit System

Fixed Davits

Counterweight System

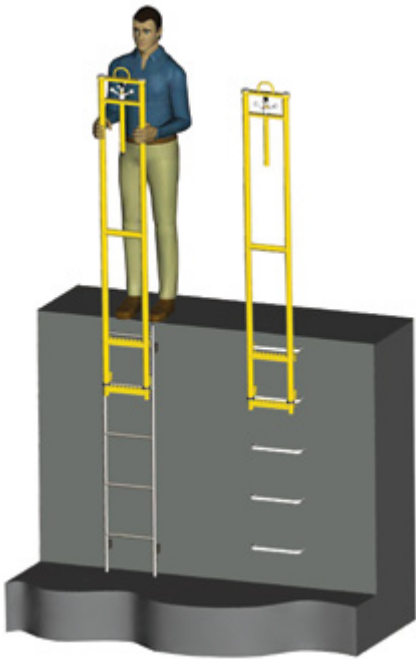
Accessories

Access and Rescue Equipment



Manhole Ladder Extension

The Xtirpa Manhole Ladder Extension helps to provide extra safety by offering a secure handhold when entering a manhole from ground level, reducing the chance of slips or falls.



USIN2252-05 - Manhole Ladder Extension

Manhole Adaptable Hand Rail

This adaptable hand rail is used with davit mast USIN2003 and allows safer and easier entry from confined spaces by providing secure handholds. The hand rail weighs 6lbs.



USIN2282 - Manhole Adaptable Hand Rail

**XTIRPA CONFINED SPACE FALL
ARREST AND RESCUE SYSTEMS**

Features and Benefits

- Portable Manhole Guard Davit System
- Tow Bar Hitch Davit Systems
- H-Base Davit System
- Fixed Davits
- Counterweight System

Accessories

Access and Rescue Equipment



Davit System Adapters



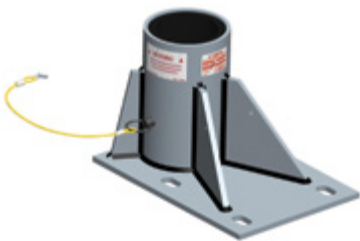
USIN2266 - Flush Floor Adapter for 102mm Mast



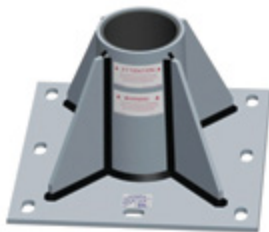
USIN2006 - Flush Floor Adapter (steel) XTIN2114 - (zinc)



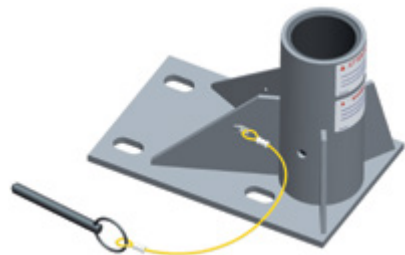
USIN2007 Fresh Concrete Flush Floor Adapter



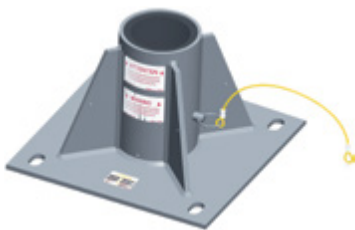
USIN2238 - 47" Floor Mount Adapter (stainless steel)



USIN2201 - 94" Floor Mount Adapter (stainless steel)



USIN2005 - 600mm Floor Mount Adapter (stainless steel)
USIN2106 - (zinc)



USIN2254 - Centre Mounted Floor Adapter for 4" Mast



USIN2105 - Centre Mounted Floor Adapter
USIN2137 - (zinc)



USIN2255 - Sleeve Adapter for 4" Mast

XTIRPA CONFINED SPACE FALL ARREST AND RESCUE SYSTEMS

Features and Benefits

Portable Manhole Guard Davit System

Tow Bar Hitch Davit Systems

H-Base Davit System

Fixed Davits

Counterweight System

Accessories

Access and Rescue Equipment



Davit System Adapters



USIN2097 - 24" Sleeve Adapter (stainless steel)
USIN2115 - (zinc)



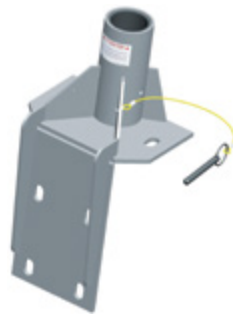
USA2201-03 - Cylinder Reducer 6" to 3"



USIN2013 - 24" Wall Mount Adaptor (stainless steel)
USIN2107 - (zinc)



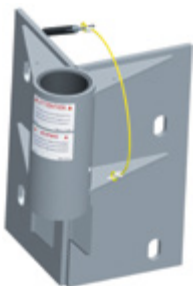
USIN2087 - Wall Mounted Universal Ring Adapter (stainless steel)



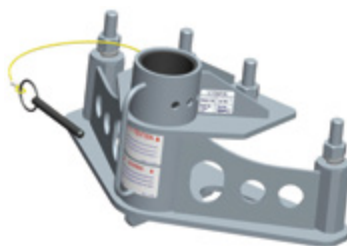
USIN2117 - 90 degree Angle Wall Adapter (stainless steel)



USIN2133- Inner 90 degree Corner Mounted Adapter (stainless steel) USIN2134 - (zinc)



USIN2131- Extended 90 degree Corner Mounted Adapter (stainless steel) USIN2132- (zinc)



USIN2171 - SGE30MVA Transformer Adapter



USIN2208 - Sliding Adapter for 14" x 6" Beams

**XTIRPA CONFINED SPACE FALL
ARREST AND RESCUE SYSTEMS**

Features and Benefits

Portable Manhole Guard Davit System

Tow Bar Hitch Davit Systems

H-Base Davit System

Fixed Davits

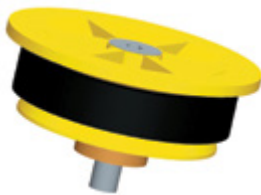
Counterweight System

Accessories

Access and Rescue Equipment



Davit System Adapters



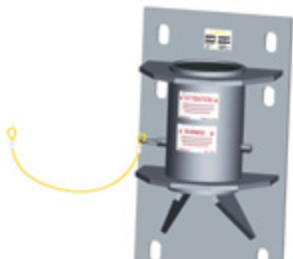
USIN2072 - Adapter Cap
USIN2073 - Adapter Cap with Steel Wire



USA2237-06 - Removable Adapter for Positioning Winch



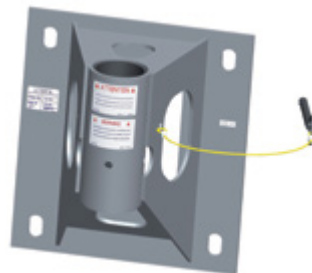
USIN2021 - Barrel Adapter (stainless steel)
USIN2129 - (zinc)



USIN2253 - Mural Adapter for 4" Mast



USIN2085 - H-Beam Adapter



USIN2124 - 203mm Clearance Mural Adapter (stainless steel)
USIN2067 - (zinc)



USIN2207 - Zinc Plated Adapter Cap
USIN2206 - Adapter Cap with Steel Wire



USIN2125 - 635-1140 Adapter



USIN2126-14 - C Clamp Adapter for Trailer Hitch Mount

XTIRPA CONFINED SPACE FALL ARREST AND RESCUE SYSTEMS

Features and Benefits

Portable Manhole Guard Davit System

Tow Bar Hitch Davit Systems

H-Base Davit System

Fixed Davits

Counterweight System

Accessories

Access and Rescue Equipment



SRL and Winch Adapters



US2002-22N - Mounting Bracket (comes with davit) also suits the Sala SRL and Winch



USIN2191 - Adapter Bracket for North SRL Bracket and Miller Man Handler



USFPMS-20 - Bracket for FPMS 65ft Personnel Winch



USFPMS-30 - Bracket for FPMS 98 ft Personnel Winch



USSVLRB-HD-15 - 3 Way Recovery Winch Adapter



USSVLRB-18 - Fall Arrest and Recovery Block Adapter



USIKHRAB - Bracket for USIKHRA-30 3 Way Retracting Lifeline



USFPRBB - Bracket for USFPRB-15 3 Way Retracting Lifeline



USIN2215 - Adapter for North SRL Bracket

XTIRPA CONFINED SPACE FALL ARREST AND RESCUE SYSTEMS

- Features and Benefits
- Portable Manhole Guard Davit System
- Tow Bar Hitch Davit Systems
- H-Base Davit System
- Fixed Davits
- Counterweight System
- Accessories**
- Access and Rescue Equipment



Pole Hoist System

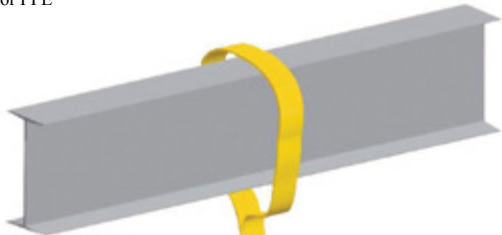
This two piece portable rescue system is one of the most versatile on the market. With the use of a certified anchor point, the rotating head allows you to retrieve someone in a confined space both vertically and horizontally.

The hoist is 85" fully extended with the first pin position at 52" and additional pin points at 57", 62", 65", 72" and 76".

The pole hoist weighs 13lbs.

Constructed from yellow security powder-coated aluminum the hoist comes complete with bracket USA2002-22N. An adjustable T-bar leg (USIN2127) is available separately. This pole hoist meets or exceeds CSA, ANSI, and OSHA Standards.

USIN8008 - Pole Hoist System for PPE



USIN2127 - Adjustable T-Bar Leg



XTIN2120 - Pole Hoist Swivel Head



USIN2002-22N - Mountaing Bracket



XTIRPA CONFINED SPACE FALL ARREST AND RESCUE SYSTEMS

Features and Benefits

Portable Manhole Guard Davit System

Tow Bar Hitch Davit Systems

H-Base Davit System

Fixed Davits

Counterweight System

Accessories

Access and Rescue Equipment



Fall Arrest and Retrieval Manhole Collar Options



Description	Size (in)	Code
Cone Shaped Safety Ring	30"	USIN2089
Cone Shaped Safet Ring	28"	USIN2089

Description	Size (in)	Code
Fall Arrest / Retrieval Manhole Collar	18" - 20"	USIN2219
Fall Arrest/ Retrieval Manhole Collar	20" - 22"	USIN2220
Fall Arrest/ Retrieval Manhole Collar	22" - 24"	USIN2221
Fall Arrest/ Retrieval Manhole Collar	24" - 26"	USIN2217
Fall Arrest/ Retrieval Manhole Collar	26" - 28"	USIN2222
Fall Arrest/ Retrieval Manhole Collar	28" - 30"	USIN2218
Fall Arrest/ Retrieval Manhole Collar	30" - 32"	USIN2169
Fall Arrest/ Retrieval Manhole Collar	32" - 34"	USIN2223
Fall Arrest/ Retrieval Manhole Collar	34" - 36"	USIN2224
Fall Arrest/ Retrieval Manhole Collar	42" - 44"	USIN2180



USA2217-05 - Ladder Adapter for Manhole Cover



USIN2010 - Retaining Ring

**XTIRPA CONFINED SPACE FALL
ARREST AND RESCUE SYSTEMS**

Features and Benefits

- Portable Manhole Guard Davit System
- Tow Bar Hitch Davit Systems
- H-Base Davit System
- Fixed Davits
- Counterweight System

Accessories

- Access and Rescue Equipment



Multi-Functional Barricade

USA2101-04 - Multi-function barricade extension

This most innovative 42" multi-functional barricade is manufactured from aircraft aluminum for durability and dependability.

Easy to fold, lightweight at only 30 lbs and easily stored in a vehicle, this unit offers a unique concept which allows the worker to assemble as many sections as needed.

With its removable delrin hinges [USA2101-4], you will be able to create a very effective safe working area for any configuration.

USIN2101 - Multi-functional barricade



USA2101-04 - Removable Delrin Hinge



XTIRPA CONFINED SPACE FALL ARREST AND RESCUE SYSTEMS

Features and Benefits

Portable Manhole Guard Davit System

Tow Bar Hitch Davit Systems

H-Base Davit System

Fixed Davits

Counterweight System

Accessories

Access and Rescue Equipment



Ratchet Action Manhole Cover Lifter

This unique concept was designed for easy handling of manhole covers. Light and durable, this model will offer an ergonomic and safe way of lifting the heaviest lids without strain or injury. The easy ratchet system allows you to always work in an ergonomic position.

Manhole Cover Lifter Characteristics

Weight	13 lbs
Height	53"
Materials	Aluminum and zinc plated steel
Strap	Black nylon
Foot	Non-skidding foot
Mechanism	Automatic rewinding mechanism in stainless steel
Maximum Capacity	1220 kgm strap tension



USIN2071 - Manhole Cover Lifter



**XTIRPA CONFINED SPACE FALL
ARREST AND RESCUE SYSTEMS**

Features and Benefits

- Portable Manhole Guard Davit System
- Tow Bar Hitch Davit Systems
- H-Base Davit System
- Fixed Davits
- Counterweight System

Accessories

- Access and Rescue Equipment



Carry Bags and Trolley



USP2001-050 - Carry Bag for 34" Manhole Guard



USP2108-025 - Carry Bag for 42" Manhole Guard



USP2101-008 - Carry Bag for Multi-Functional Barricade



USP2002-046 - Carry Bag for Davit Arm



USP2118-017 - Carry Bag for H-Base Davit System [Body]



USP2120-014 - Carry Bag for Pole Hoist



USP2118-018 - Carry Bag for H-Base Davit System [Foot]



USP2121-003 - Carry Bag for Pole Hoist



USP2003-011 - Carry Bag for Davit Mast



USIN2031 - Carry Bag for Davit Arm and SRL



USIN2232 - Trolley for Xtirpa System

XTIRPA CONFINED SPACE FALL ARREST AND RESCUE SYSTEMS

Features and Benefits

Portable Manhole Guard Davit System

Tow Bar Hitch Davit Systems

H-Base Davit System

Fixed Davits

Counterweight System

Accessories

Access and Rescue Equipment



US1100 Harness

- Lightweight construction
- No-slide rear D ring
- Rescue attachment points
- Adjustable shoulders
- Adjustable chest strap
- Adjustable pass through buckle leg straps
- Breathable mesh panel allows easy donning
- Meets ANSI Z359.1-2007



Code: US1100

US1101 Harness

- Lightweight construction
- No-slide rear D ring
- Rescue attachment points
- Adjustable chest strap
- Adjustable tongue and buckle leg straps
- Breathable mesh panel allows easy donning
- Meets ANSI Z359.1-2007



Code: US1101

XTIRPA CONFINED SPACE FALL ARREST AND RESCUE SYSTEMS

- Features and Benefits
 - Portable Manhole Guard Davit System
 - Tow Bar Hitch Davit Systems
 - H-Base Davit System
 - Fixed Davits
 - Counterweight System
 - Accessories
 - Access and Rescue Equipment**
-



US1121 Harness



Code: US1121



- Lightweight construction
- No-slide rear D ring
- Side D rings
- Rescue attachment points
- Adjustable chest strap
- Adjustable tongue and buckle leg straps
- Breathable mesh panel allows easy donning
- Meets ANSI Z359.1-2007

USWORKA Harness



Code: USWORKA



- Versatile harness
- Adjustable padded shoulders
- Comfort waist belt
- No-slide rear D ring
- Contoured side D rings
- Removable tool belt
- Adjustable tongue and buckle leg straps
- Breathable mesh panel allows easy donning
- Meets ANSI Z359.1-2007

XTIRPA CONFINED SPACE FALL ARREST AND RESCUE SYSTEMS

Features and Benefits

Portable Manhole Guard Davit System

Tow Bar Hitch Davit Systems

H-Base Davit System

Fixed Davits

Counterweight System

Accessories

Access and Rescue Equipment



USCLIMA Lite Harness

- Versatile harness
- Quick connect buckles
- Lightweight
- Rear D attachment
- Padded shoulder, back and leg straps
- Velcro lanyard parking points
- Meets ANSI Z359.1-2007



Code: USCLIMA-L

USCLIMA Tech Harness

- Versatile harness
- Quick connect buckles
- Rear D attachment
- Side D rings
- Padded waist belt with tool loops
- Padded shoulder, back and leg straps
- Velcro lanyard parking points
- Meets ANSI Z359.1-2007



Code: USCLIMA-T

XTIRPA CONFINED SPACE FALL ARREST AND RESCUE SYSTEMS

Features and Benefits

Portable Manhole Guard Davit System

Tow Bar Hitch Davit Systems

H-Base Davit System

Fixed Davits

Counterweight System

Accessories

Access and Rescue Equipment



Confined Space Accessories

Personnel Winch

These robust personnel winches are perfectly suited to the demanding requirements of the confined space environment.

Tough, steel construction, combined with sensible features, allow operators to get on with the task at hand with total confidence.

Attention to detail, such as wire guide rollers and a spring loaded spool retention bar add to the workhorse nature of these winches.

– 65 ft and 100 ft units available

– Galvanized steel cable

– 65 ft unit weighs 30 lbs, 100 ft 34 lbs.

– 65 ft and 100 ft maximum load of 330 lbs.

Code: USRW65 / USRW100

Spreader Bar

- For use in tight confined space entry applications
- Enables a worker to be lifted and lowered with a vertical profile which is impossible with a D ring connection
- A wrist restraint is provided to enable further narrowing of the shoulders, especially during a rescue situation
- Stainless steel bar and 2" webbing construction with two heavy duty snap hooks.

Code: USSPBAR



Saverline 50 ft 3 Way Retracting Lifeline

This self retracting lifeline offers fall protection when entering or exiting confined spaces, and have the additional feature of an easy to deploy emergency winch function.

- 50 ft galvanized steel lifeline
- Strong, lightweight aluminum casing
- Swivel fall indicator hooks standard
- Weighs 20 lbs
- Maximum load 330 lbs.

Code: USAB15RT



XTIRPA CONFINED SPACE FALL ARREST AND RESCUE SYSTEMS

Features and Benefits

Portable Manhole Guard Davit System

Tow Bar Hitch Davit Systems

H-Base Davit System

Fixed Davits

Counterweight System

Accessories

Access and Rescue Equipment



Heavy Duty Tripod

This aluminum tripod has been designed for tough work conditions and long term use and is particularly suitable for the hire industry. Rectangular, fully adjustable legs and a one piece cast head are designed to resist damage. Integrated twin pulleys and an additional auxiliary anchorage point allow many options and combinations of access, egress and rescue equipment to be specified. Standard extended height is 9 ft.

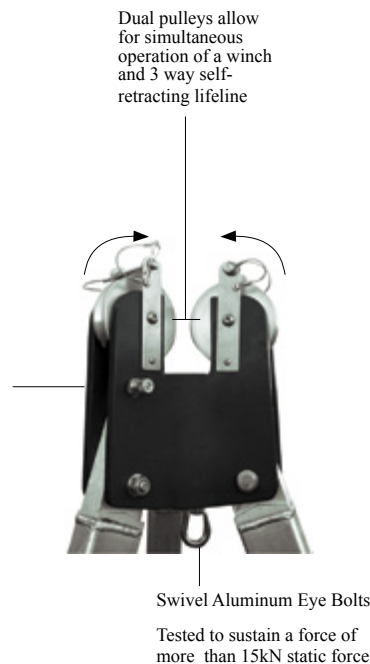
Code: USTripod-HD



Heavy Duty Tripod

Working Load Limit	770 lbs
Weight	50 lbs
Standard Height	6 ft
Extended Height	9 ft
No. of Persons	2
Wheelbase (Footprint) Diameter	7.5 ft
Legs	Aluminum
Head Wheels	Stainless Steel
Hardware	Zinc Plated Steel
Head Finish	Black Powder Coated

Tripod Head
Robust aluminium alloy cast head with two integral pulleys for smooth winching/ lowering operations.



XTIRPA CONFINED SPACE FALL ARREST AND RESCUE SYSTEMS

Features and Benefits

Portable Manhole Guard Davit System

Tow Bar Hitch Davit Systems

H-Base Davit System

Fixed Davits

Counterweight System

Accessories

Access and Rescue Equipment



4000 Entry and Egress Pulley System

Our pulley system with a 4:1 mechanical advantage is simple to use and features one way pulleys ie: free wheeling to assist the hauling effort when raising, and locked, adding friction and resistance when lowering.

Safety is further enhanced with a locking, spring loaded, toothed cam. It can be self operated or by a second person. The kit comes complete with a fold out rescue organizer bag, anchor sling carabiners and an ascender/rope grab for even greater ergonomics.

Kit Contains

- ALF rescue pulley system
- 160 ft of rescue rope
- 2 carabiners
- 2 round slings
- 1 hand ascender
- Lay flat gear organizer bag

CODE: USGOTCHA4000







SpanSet Inc.
3125 Industrial Dr.
Sanford, NC 27332
Phone: 800-334-7505
Fax: 919-774-7589
www.spanset-usa.com

