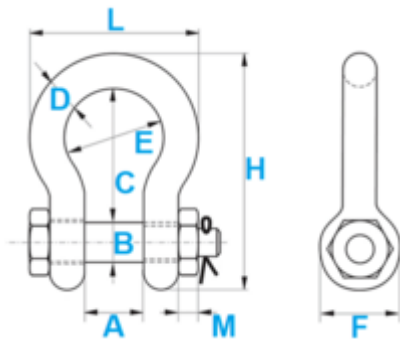


Green Pin Schäkel, gerade und mit Kragenbolzen

Flexibel einsetzbarer Qualitätsschäkel



Artikel Name kurz	WLL [kg]	WLL [t]	A [mm]	B [mm]	C [mm]	D [mm]	F [mm]
GreenPin D SCP 0.33t	330	0.33	10	6	19	5	80
GreenPin D SCP 0.5t	500	0.5	12	8	22	7	16.5
GreenPin D SCP 0.75t	750	0.75	13	10	26	9	20
GreenPin D SCP 1t	1000	1	17	11	32	9	22.5
GreenPin D SCP 1.5t	1500	1.5	19	13	37	11	26.5
GreenPin D SCP 2t	2000	2	22	16	43	13.5	34
GreenPin D SCP 3.25t	3250	3.25	27	19	51	16	40
GreenPin D SCP 4.75t	4750	4.75	31	22	59	19	46
GreenPin D SCP 6.5t	6500	6.5	36	25	73	22	52
GreenPin D SCP 8.5t	8500	8.5	43	28	85	25	59
GreenPin D SCP 9.5t	9500	9.5	47	32	90	28	66
GreenPin D SCP 12t	12000	12	51	35	94	32	72
GreenPin D SCP 13.5t	13500	13.5	57	38	115	35	80
GreenPin D SCP 17t	17000	17	60	42	127	38	88
GreenPin D SCP 25t	25000	25	74	50	149	45	103
GreenPin D SCP 35t	35000	35	83	57	171	50	111
GreenPin D SCP 42.5t	42500	42.5	95	65	190	57	130
GreenPin D SCP 55t	55000	55	105	70	203	65	145

Artikel Name kurz	H [mm]	Nettogewicht kg [kg]
GreenPin D SCP 0.33t	209	0.03
GreenPin D SCP 0.5t	41.5	0.05
GreenPin D SCP 0.75t	50	0.1
GreenPin D SCP 1t	59	0.14
GreenPin D SCP 1.5t	68	0.19
GreenPin D SCP 2t	81	0.36
GreenPin D SCP 3.25t	97	0.63
GreenPin D SCP 4.75t	112	1.01
GreenPin D SCP 6.5t	134	1.5
GreenPin D SCP 8.5t	154	2.3
GreenPin D SCP 9.5t	167	3.24



Artikel Name kurz	H [mm]	Nettogewicht kg [kg]
GreenPin D SCP 12t	180	4.4
GreenPin D SCP 13.5t	209	6
GreenPin D SCP 17t	230	7.5
GreenPin D SCP 25t	271	14
GreenPin D SCP 35t	305	18.9
GreenPin D SCP 42.5t	345	26.3
GreenPin D SCP 55t	376	37.15



BESTELLNUMMERN

WLL	GreenPin D SCP 0.33t	GreenPin D SCP 0.5t	GreenPin D SCP 0.75t	GreenPin D SCP 1t	GreenPin D SCP 1.5t	GreenPin D SCP 2t	GreenPin D SCP 3.25t	GreenPin D SCP 4.75t	GreenPin D SCP 6.5t	GreenPin D SCP 8.5t	GreenPin D SCP 9.5t
0.33 t	2015298	-	-	-	-	-	-	-	-	-	-
0.5 t	-	2009170	-	-	-	-	-	-	-	-	-
0.75 t	-	-	2009171	-	-	-	-	-	-	-	-
1 t	-	-	-	2009172	-	-	-	-	-	-	-
1.5 t	-	-	-	-	2009174	-	-	-	-	-	-
2 t	-	-	-	-	-	2009175	-	-	-	-	-
3.25 t	-	-	-	-	-	-	2009176	-	-	-	-
4.75 t	-	-	-	-	-	-	-	2009177	-	-	-
6.5 t	-	-	-	-	-	-	-	-	2009178	-	-
8.5 t	-	-	-	-	-	-	-	-	-	2009179	-
9.5 t	-	-	-	-	-	-	-	-	-	-	2009180
12 t	-	-	-	-	-	-	-	-	-	-	-
13.5 t	-	-	-	-	-	-	-	-	-	-	-
17 t	-	-	-	-	-	-	-	-	-	-	-
25 t	-	-	-	-	-	-	-	-	-	-	-
35 t	-	-	-	-	-	-	-	-	-	-	-
42.5 t	-	-	-	-	-	-	-	-	-	-	-
55 t	-	-	-	-	-	-	-	-	-	-	-

WLL	GreenPin D SCP 12t	GreenPin D SCP 13.5t	GreenPin D SCP 17t	GreenPin D SCP 25t	GreenPin D SCP 35t	GreenPin D SCP 42.5t	GreenPin D SCP 55t
0.33 t	-	-	-	-	-	-	-
0.5 t	-	-	-	-	-	-	-
0.75 t	-	-	-	-	-	-	-
1 t	-	-	-	-	-	-	-
1.5 t	-	-	-	-	-	-	-
2 t	-	-	-	-	-	-	-
3.25 t	-	-	-	-	-	-	-
4.75 t	-	-	-	-	-	-	-
6.5 t	-	-	-	-	-	-	-
8.5 t	-	-	-	-	-	-	-
9.5 t	-	-	-	-	-	-	-
12 t	2009181	-	-	-	-	-	-
13.5 t	-	2009182	-	-	-	-	-



WLL	GreenPin D SCP 12t	GreenPin D SCP 13.5t	GreenPin D SCP 17t	GreenPin D SCP 25t	GreenPin D SCP 35t	GreenPin D SCP 42.5t	GreenPin D SCP 55t
17 t	-	-	2009183	-	-	-	-
25 t	-	-	-	2009184	-	-	-
35 t	-	-	-	-	2009185	-	-
42.5 t	-	-	-	-	-	2009186	-
55 t	-	-	-	-	-	-	2009187

■ Normen	EN 13889
■ Klasse	60
■ Hauptmaterial	Stahl
■ Temperaturbereich	-20° C to + 200° C
■ Verpackungseinheit (VPE) Inhalt	1

